

Plastic gearbox cover & metal bracket included with this series.

RATIOS NOW AVAILABLE AS EX-STOCK ITEMS.

Fitted with RE540/1 (4.5v - 15v) Motor:

919D2.51	Ratio	2.5:1
919D61	Ratio	6:1
919D111	Ratio	11:1
919D301	Ratio	30:1
919D501	Ratio	50:1
919D1001	Ratio	100:1
919D1481	Ratio	148:1
919D5001	Ratio	500:1
919D8101	Ratio	810:1
919D30001	Ratio	3000:1

Designed for heavy-duty industrial and model applications this robust unit boasts a powerful high quality, three pole motor with sintered bronze bearings. The metal gearbox incorporates sleeved bearings, enabling the high torque transfer from the motor to be transmitted through the gearbox. The unit is mounted on a 1mm thick plated steel bracket.

MOTOR DATA. (RE540/1)

MODEL	VOLTAGE		NO LOAD		AT MAXIMUM EFFICIENCY					STALL TORQUE		
	OPERATING RANGE	NOMINAL	SPEED	CURRENT	SPEED	CURRENT	TORQUE		OUTPUT	EFF	TORQUE	
			R.P.M.	A	R.P.M.	A	oz-in	g-cm	W	%	oz-in	g-cm
RE540/1	4.5 - 15	6v Constant	7500	0.45	6180	2.1	1.64	118.2	7.49	59.4	9.31	670
RE540/1	4.5 - 15	12v Constant	14500	0.7	12048	2.81	2.22	160	19.8	62.71	14.29	1029

Stall Current: RE540/1 at 6v = 8.24A Stall Current: RE540/1 at 1.5v = 2.41AA

GEARBOX DATA.

PART NO	RATIO	REDUCTION TABLE RPM (No Load) [°]					WEIGHT	TORQUE RATING AT: 12v (g.cm) [^]
		4.5v	6v	9v	12v	15v		
919D2.51	2.5:1	2175	2900	4350	5800	7250	240g	309
919D61	6:1	906	1209	1813	2417	3021	234g	741
919D111	11:1	494	659	989	1318	1648	238g	1000
919D301	30:1	181	242	362	483	604	249g	2000
919D501	50:1	109	145	218	290	363	255g	3000
919D1001	100:1	54	73	109	143	181	255g	6000
919D1481	148:1	37	49	74	98	123	255g	6000
919D5001	500:1	11	15	22	29	36	260g	6000
919D8101	810:1	7	9	14	18	23	255g	6000
919D30001	3000:1	1.8	2.4	3.6	4.8	6	262g	6000

NOTES: ° Motor speeds may vary by + or - 12.5%

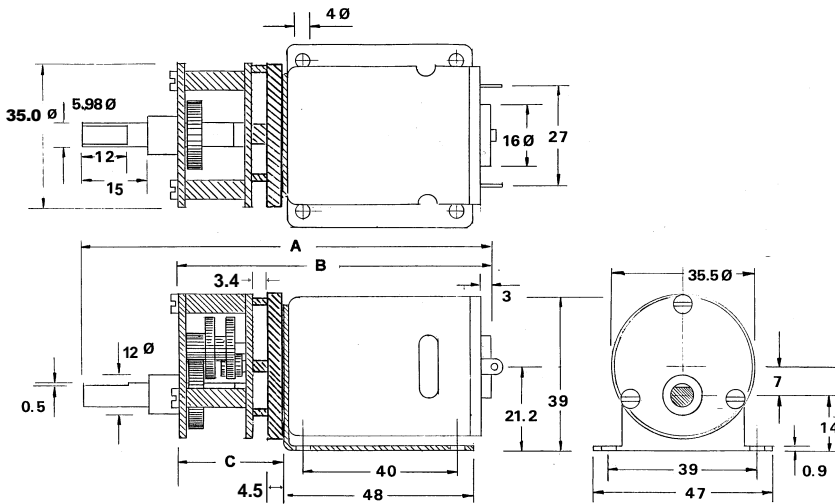
^ Geared Motor Torque Ratings at Maximum Efficiency. To establish Torque Rating in Nm, divide g.cm by 10197.0

24 volt versions are available for this range of motor-gearboxes. Performance data is similar to 12 volt versions. This version also has an extended 10mm rear shaft to accommodate motor encoders. When ordering please use 12v version part number suffixed with 24V. I.E. 919D111 will be 919D11124V

IMPORTANT NOTICES:

At very low ratios the torque produced by this geared motor combination may exceed the maximum permissible torque of the gearbox. In this situation the unit must not be allowed to stall as this may damage the gears. Due to the wide range of applications for this product it is the users responsibility to establish the products suitability for their individual purpose(s).

919D SERIES TECHNICAL DRAWING

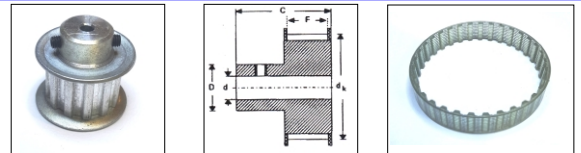


RATIO	A	B	C
2.5:1	98.7	73.7	21.7
6:1	98.2	73.2	21.2
11:1	98.2	73.2	21.2
30:1	100.7	75.7	23.7
50:1	103.2	78.2	26.2
100:1	103.2	78.2	26.2
148:1	105.7	80.7	28.7
500:1	108.2	83.2	31.2
810:1	108.2	83.2	31.2
3000:1	110.7	85.7	33.7

NOTE: All diameters in mm

919D SERIES	
No Load Backlash	Max 2 deg.
Max Radial Load (10mm from flange)	1000gf.
Shaft Axial Load	700gf.

**TIMING PULLEYS & TIMING BELTS.
FOR FURTHER DETAILS SEE TIMING PULLEYS &
TIMING BELTS PAGE ON MFACOMODRILLS.COM**



ACCESSORIES FOR 919D SERIES GEARBOX

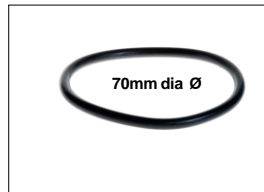


M3 Anti vibration mount. 9g
Part No: 1071

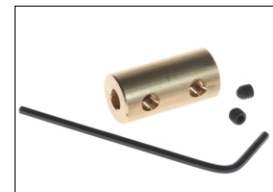
M4 Anti vibration mount. 30g
Part No: 1072



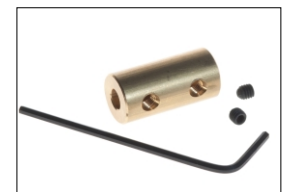
Universal Couplings. 12.5mm dia. 44mm length.
Part No: 1105/60
6mm - 6mm. See Universal Couplings Page for full range of combinations



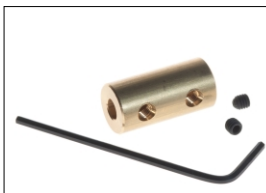
"O" Ring 70mm x 5mm Dia. 5g
Part No: 917D2515



In-Line Coupling. 6mm - 6mm.
(Dia. 12.67mm x 24.8mm). 23g
Part No: 919D1



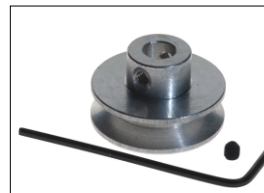
In-line Coupling. 6mm-8swg (Meccano)
Dia. 10mm x 20mm. 23g
Part No: 919D1/2



In-line Coupling. 8mm-8mm.
Dia. 12.67mm x 24.8mm. 23g
Part No: 919D1/8



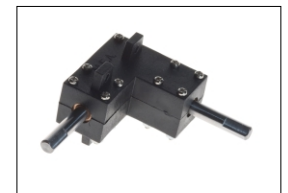
Voltage Regulator. (6-15v DC Input. 4v-12v output). 26mm x 31mm x 15.5mm. 30g
Part No: 919D2



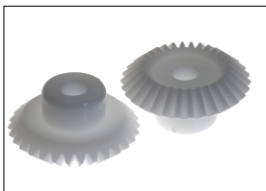
Pulley. 25mm dia. (Aluminium). 10g
Part No: 919D4



Pulley. 16mm dia. (Aluminium). 4g
Part No: 919D5



Bevel Gearbox. (Right Angle). 42g
Part No: 919D24



Nylon Bevel Gears 1:1. OD30.7mm
ID 6mm. Module 1.0. 6g
Part No: 919D25



Stainless Steel Shaft 5mm OD x 150mm. 23g
Part No: 919D26

Stainless Steel Shaft 6mm OD x 150mm. 36g
Part No: 919D26/1

Stainless Steel Shaft 8mm OD x 150mm. 59g
Part No: 919D26/2



Gear Adapter. 6mm bore. M10 thread.
12g
Part No: 919D27



Bearing Blocks
5mm I.D. (19.06 x 19.0mm x 10mm) 32g
Part No: 919D30

6mm I.D. (20 x 20mm x 12.5mm) 32g
Part No: 919D30/1

8mm I.D. (19.0 x 19.0mm x 13.0mm) 32g
Part No: 919D30/2

Subject to minimum order quantities of 250 units, the following ratios are also available with a six week lead-time. The physical dimensions of these other gearboxes may vary from the data as illustrated above. Details of individual gearboxes are available upon request.

GEARBOX 10:1 with 540/1 motor
GEARBOX 18:1 with 540/1 motor
GEARBOX 60:1 with 540/1 motor
GEARBOX 70:1 with 540/1 motor
GEARBOX 75:1 with 540/1 motor

GEARBOX 90:1 with 540/1 motor
GEARBOX 120:1 with 540/1 motor
GEARBOX 180:1 with 540/1 motor
GEARBOX 200:1 with 540/1 motor
GEARBOX 250:1 with 540/1 motor

GEARBOX 300:1 with 540/1 motor
GEARBOX 350:1 with 540/1 motor
GEARBOX 400:1 with 540/1 motor
GEARBOX 450:1 with 540/1 motor
GEARBOX 600:1 with 540/1 motor

GEARBOX 700:1 with 540/1 motor
GEARBOX 750:1 with 540/1 motor
GEARBOX 900:1 with 540/1 motor
GEARBOX 1000:1 with 540/1 motor
GEARBOX 1500:1 with 540/1 motor