

FLASH MANUAL

JT-PSG9080



1. GENERAL INFORMATION

Dear customer,
 thank you very much for choosing our product.
 In following, we will introduce you to what to observe while starting up
 and using this product.
 Should you encounter any unexpected problems during use, please do
 not hesitate to contact us.

Only use the firmware versions published by Joy-IT to flash your JT-PSG9080.



The firmware versions published by Joy-IT are specifically adapted to the Joy-IT JT-PSG9080 and should never be used for other devices.

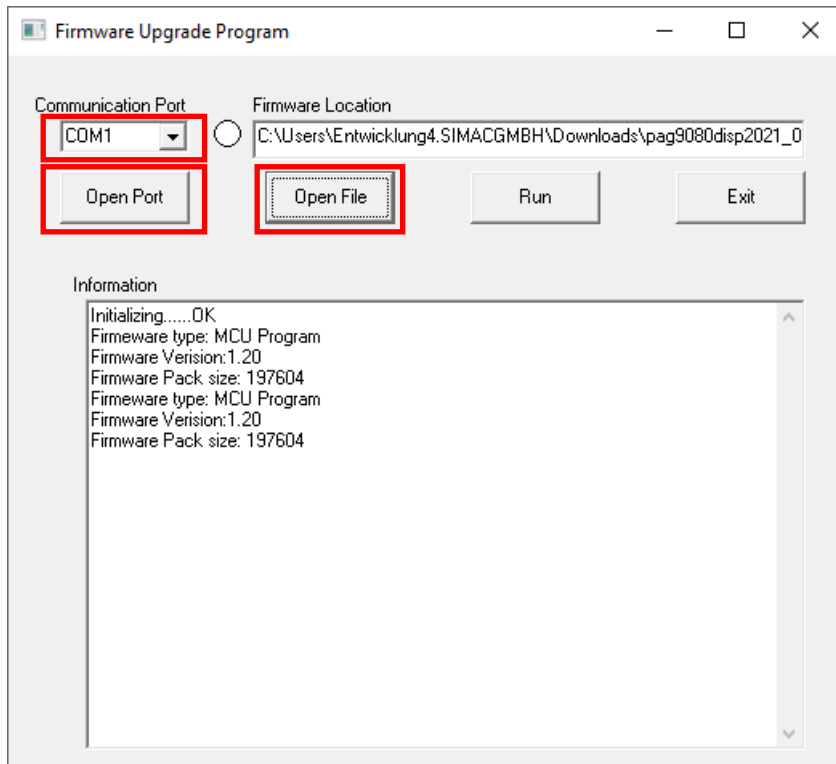
2. FLASHING THE FIRMWARE

First, you need to download the software for flashing and the latest firmware version, you can find it [here](#).

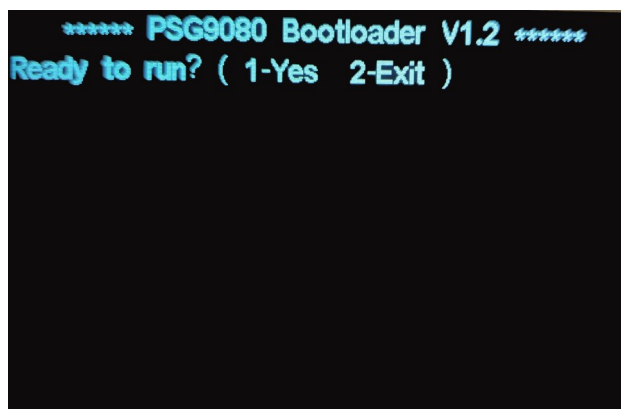
Now connect your PSG9080 to your PC with a USB or TTL cable and switch it on.

Now start the Firmware-Upgrade.exe.

Now select the **COM port** to which your signal generator is connected and under **Open File** the path of your firmware to be installed. Then press **Open Port**.

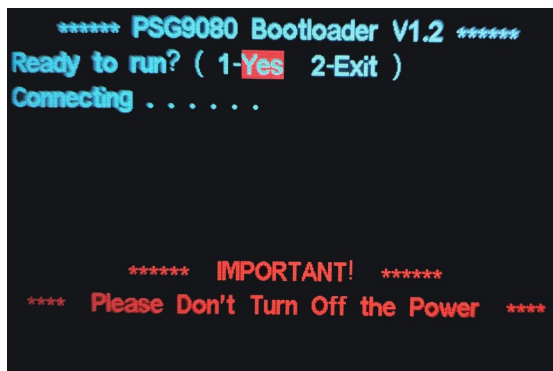


You should now see the following on the display of your signal generator:

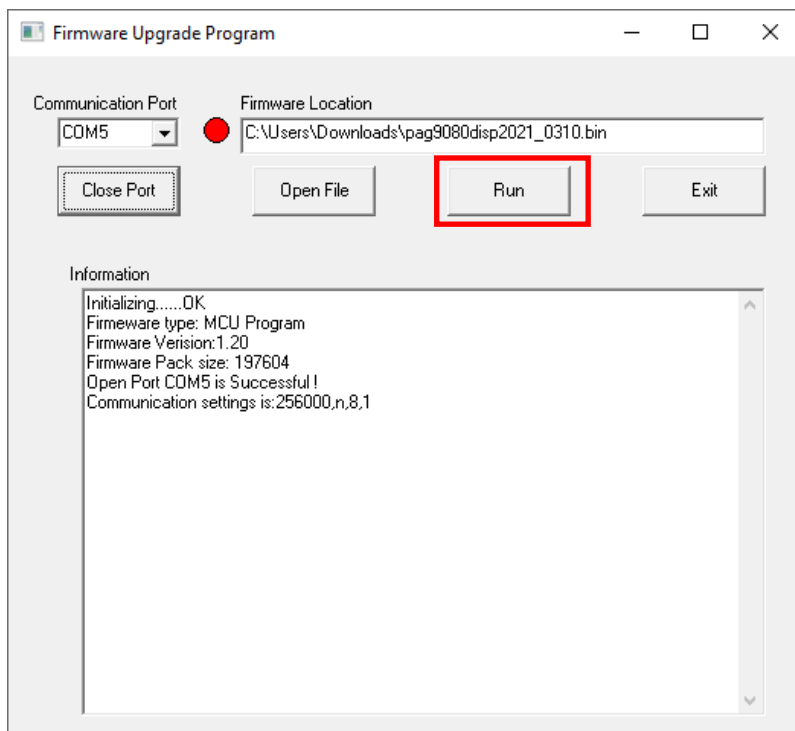


To continue, press **1** on the numeric keypad of your PSG9080. To cancel the operation, you can press **2**.

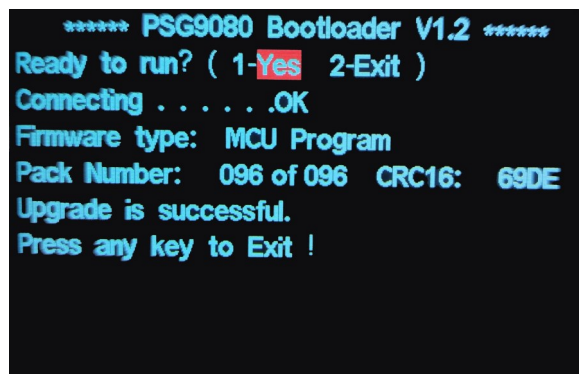
Now you will see the following display on your signal generator:



Now you can click on **Run** to start the firmware upgrade.

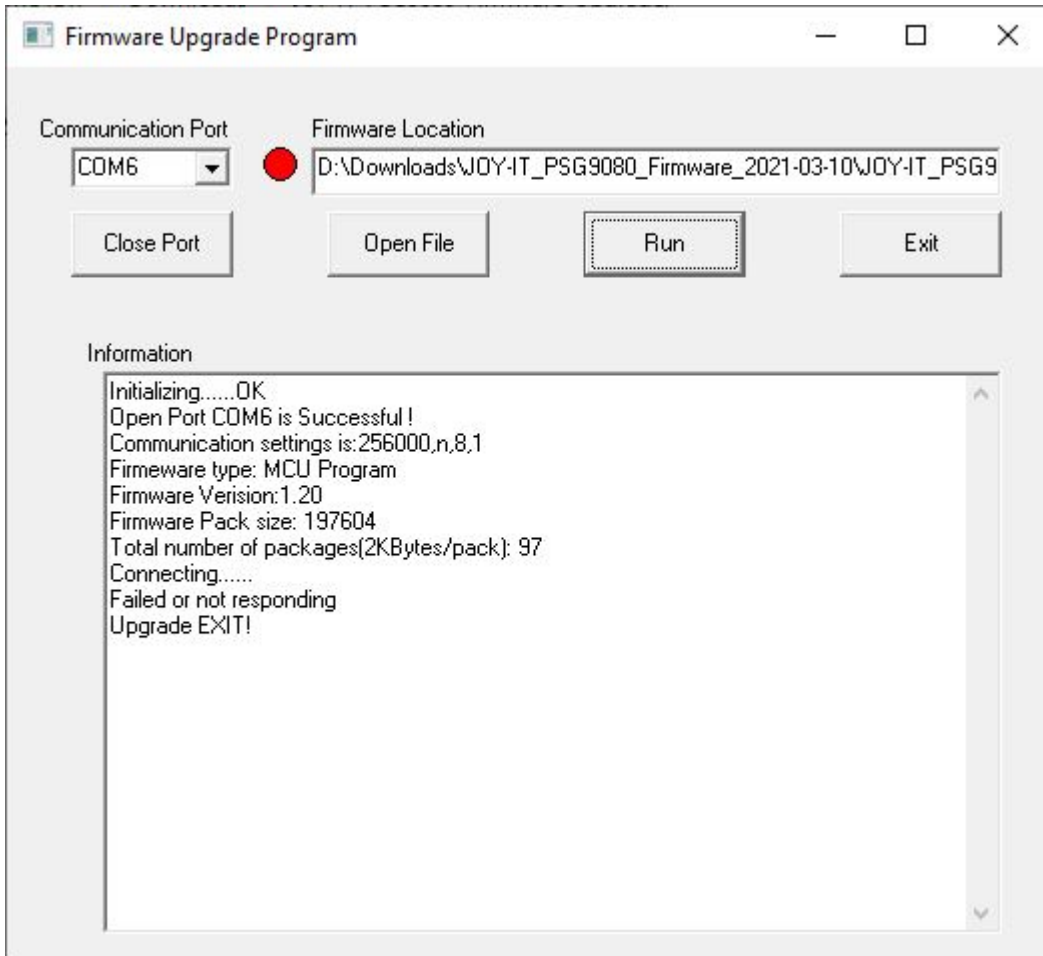


After the successful upgrade, you will see the following on your signal generator:



Now press any button on your signal generator to complete the installation. Your signal generator will then switch off automatically.

If the upgrade fails with the following error message, follow the steps listed below.



1. Click on **Close Port**.
2. **Switch off** your PSG9080 using the switch on the back of the device.
3. Use the switch again to **turn** the device back **on**.
4. Click on **Open Port**.
5. Press **1** on the keypad of your signal generator.
6. Click on **Run**.

The firmware upgrade should now start.

3. ADDITIONAL INFORMATION

Our information and take-back obligations according to the Electrical and Electronic Equipment Act (ElektroG)

Symbol on electrical and electronic equipment:



This crossed-out dustbin means that electrical and electronic appliances do not belong in the household waste. You must return the old appliances to a collection point.

Before handing over waste batteries and accumulators that are not enclosed by waste equipment must be separated from it.

Return options:

As an end user, you can return your old device (which essentially fulfils the same function as the new device purchased from us) free of charge for disposal when you purchase a new device.

Small appliances with no external dimensions greater than 25 cm can be disposed of in normal household quantities independently of the purchase of a new appliance.

Possibility of return at our company location during opening hours:

SIMAC Electronics GmbH, Pascalstr. 8, D-47506 Neukirchen-Vluyn, Germany

Possibility of return in your area:

We will send you a parcel stamp with which you can return the device to us free of charge. Please contact us by email at Service@joy-it.net or by telephone.

Information on packaging:

If you do not have suitable packaging material or do not wish to use your own, please contact us and we will send you suitable packaging.

4. SUPPORT

If there are still any issues pending or problems arising after your purchase, we will support you by e-mail, telephone and with our ticket support system.

Email: service@joy-it.net

Ticket system: <http://support.joy-it.net>

Telephone: +49 (0)2845 98469-66 (10-17 o'clock)

For further information please visit our website:

www.joy-it.net